

Designer handbags made
with traditional Japanese paper

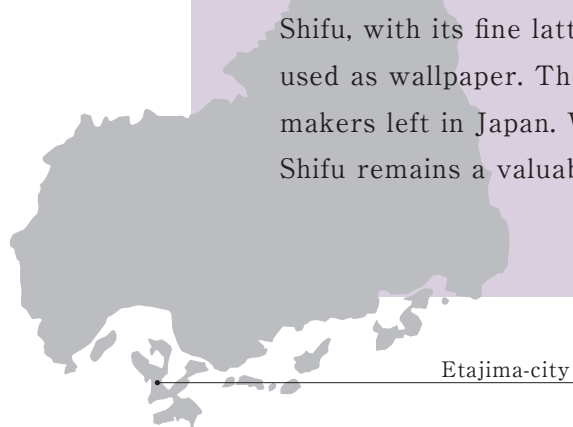
The story of HIROSHIMA SHIFU



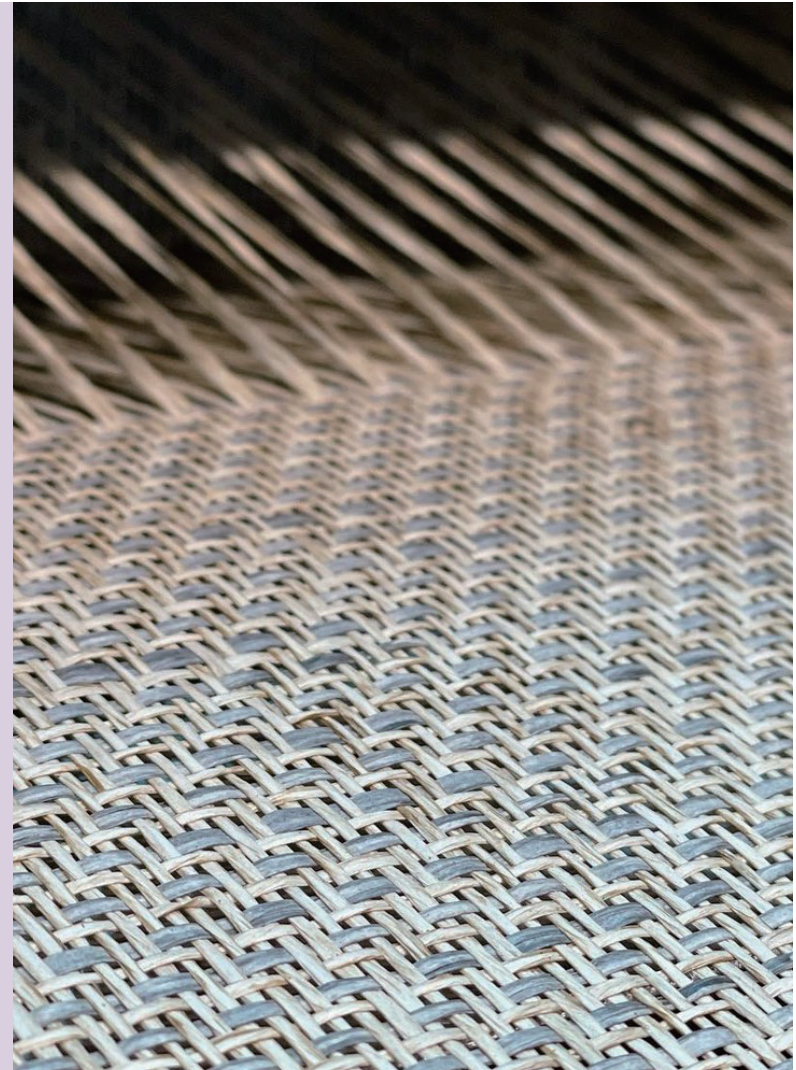
HIROSHIMA SHIFU

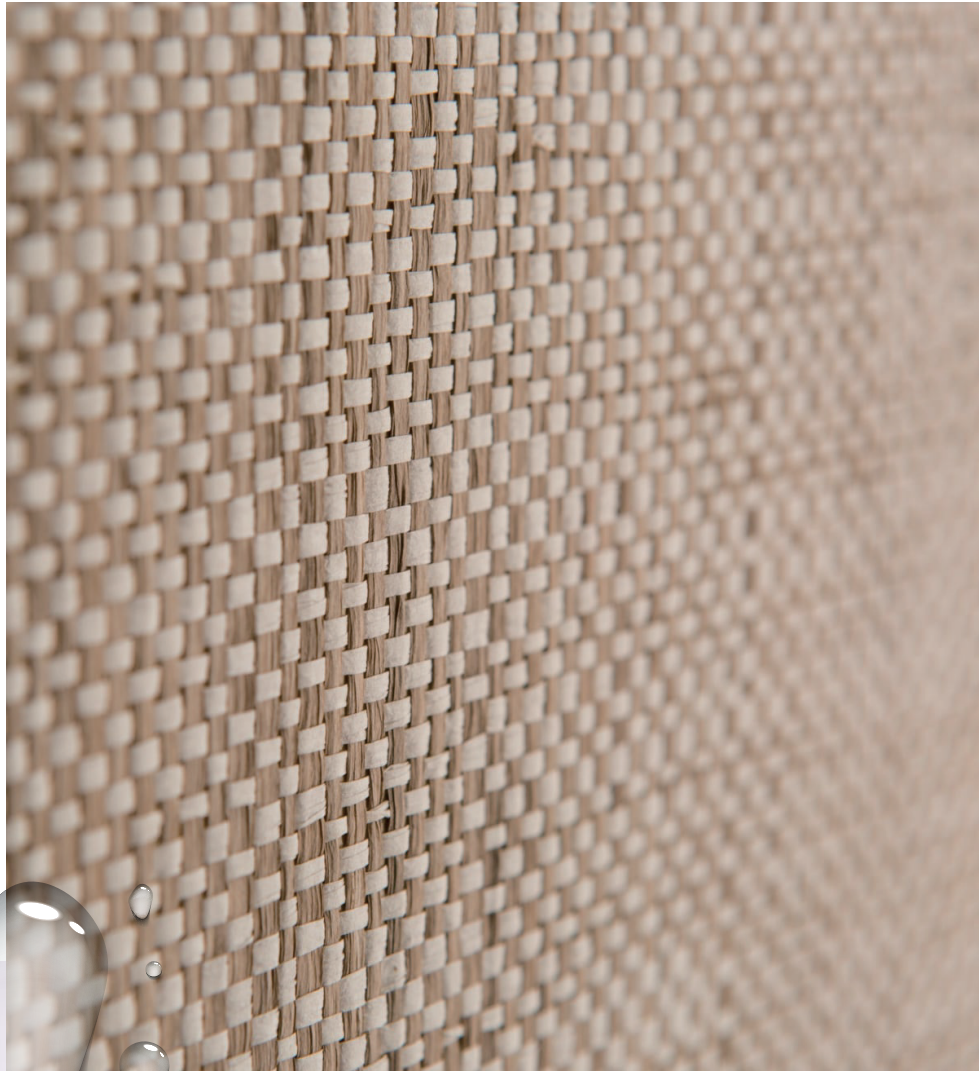
Shifu is a paper fabric with a history of more than 400 years

Shifu is made from woven threads of traditional Japanese washi paper. It's produced at a paper Factory on Etajima island in Hiroshima Prefecture, surrounded by the sparkling waves of the Seto Inland Sea. Shifu, with its fine lattice pattern, is often used as wallpaper. There are now only two makers left in Japan. We are one of them. Shifu remains a valuable traditional textile.



Etajima-city





Shifu is a breathable material perfect for the Japanese climate

It draws in moisture on rainy days and expels it on sunny days. With proper care, Shifu lasts more than 30 years.

In fact, some Shifu made 50 years ago is still in use today with its original texture intact. Shifu lasts a long time even in hot and humid environments.



Our passion to create one-of-a-kind bags



We began producing Shifu after discovering its history and texture.

The history of Shifu goes back a long way.

Around the year 1800, it reached its heyday and even saw use in paper kimonos, but declined as modern spinning technology outpaced Shifu's labor-intensive production. We wanted to continue Shifu's proud tradition, carry on its superb quality, and use this traditional Japanese craft to make a product with modern appeal.

As a result we created these unique bags.

Carry tradition with you with a one-of-a-kind Shifu bag.



The world's first designer bag using paper

The world's first bag using Shifu fabric launched under the brand "HIROSHIMA SHIFU."

Japanese artisans worked to create a bag using traditional Japanese textiles with a unique design that could match with any fashion — whether casual, elegant, formal, or Japanese traditional — and that could compete with other designer bags.

We hope our bags connect people to Japanese traditions not only here in Japan but around the world.

Tradition's in the bag



Shifu Artisans

Paper cloth is a traditional fabric woven with yoked threads of Japanese Washi paper. At one of only two factories in Japan, the paper cloth is made by woven threads that respond to temperature and humidity.



Designer

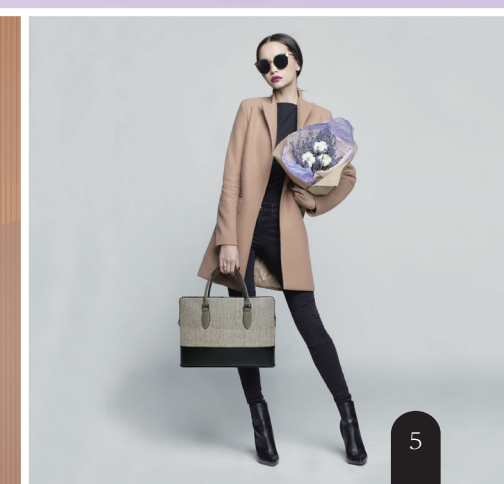
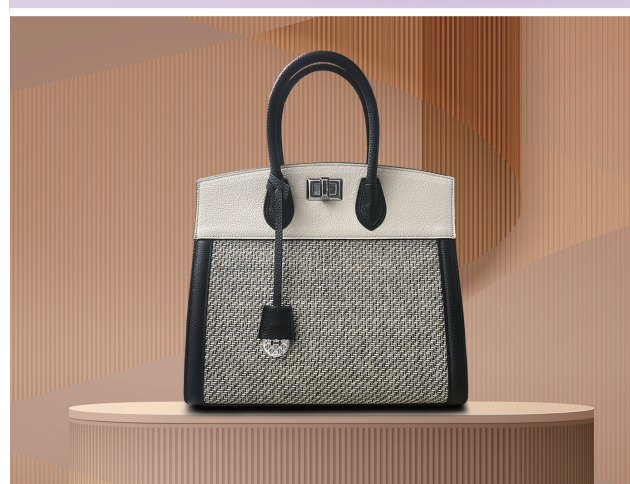
A spatial designer for hotels, shops, and advertisements. She loves bags and has been studying bag design for many years. Her exclusive paper cloth bags bring elegance to any look.



Bag makers

Our bags are not mass-produced in a factory, but carefully made one at a time by dedicated artisans. With a proven track record of sales in Japan and abroad, the quality of bags made by our skilled artisans is as good as that of any designer brand.

English translation : Hisako Yamada



Designer handbags
from the heart of Japan.



HIROSHIMA SHIFU

4-2-11-102 Sagata, Hatsukaichi City, Hiroshima, JAPAN 738-0001

E-mail : shifu@nexus-hiroshima.jp